

# What Is Addiction, Really? Understanding the Brain

---

## INTRODUCTION

Addiction has been misunderstood for generations—often viewed as simply a lack of willpower or a moral failing. However, modern neuroscience has revealed that addiction is actually a complex brain disorder that changes how the brain functions. Understanding the science of addiction helps us develop compassion for ourselves and others while finding more effective approaches to recovery.

This packet explains how addiction affects the brain, why some people are more vulnerable than others, and why recovery requires more than just "trying harder." Whether you're personally struggling with addiction, supporting someone who is, or simply want to understand this condition better, this information provides a foundation for more effective approaches to healing.

---

## WHAT ADDICTION IS—AND ISN'T

ADDICTION IS	ADDICTION ISN'T
A brain disorder affecting motivation and control	A moral failing or character flaw
A condition that changes brain structure & function	Just a matter of willpower or choice
A chronic condition with periods of remission	Something only "weak" people experience
Influenced by genetics, trauma, and environment	Simply the result of bad decisions or poor morals
Treatable with proper support and intervention	A hopeless condition without possibility for recovery



---

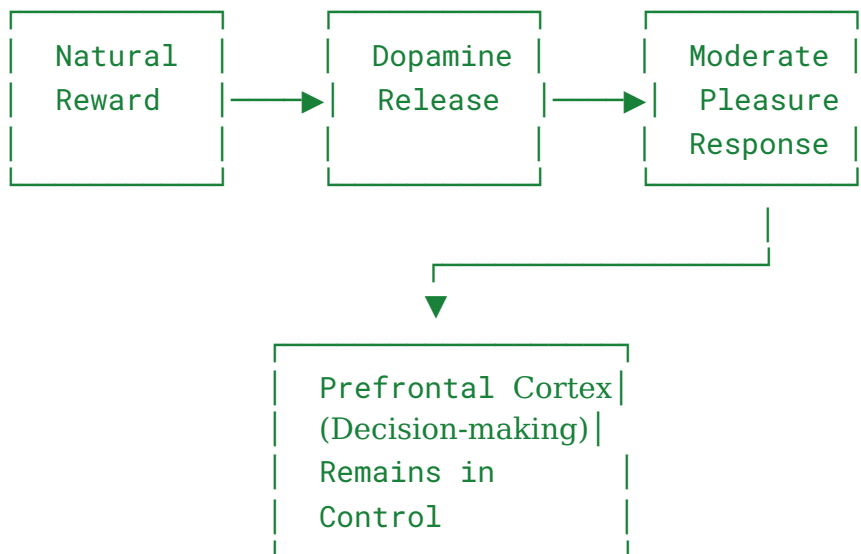
## THE BRAIN'S REWARD SYSTEM

The foundation of addiction involves the brain's reward system, which evolved to motivate behaviors essential for survival.

### How the reward system normally works:

1. **Natural rewards** (food, water, social connection, etc.) trigger the release of dopamine, a neurotransmitter that creates feelings of pleasure and reinforces important behaviors.
2. The **prefrontal cortex** (the brain's "decision-maker") evaluates whether the pleasure is worth potential risks or consequences.
3. With balanced function, this system helps us seek healthy rewards while avoiding harmful choices.

### INORMAL REWARD PROCESSING



---

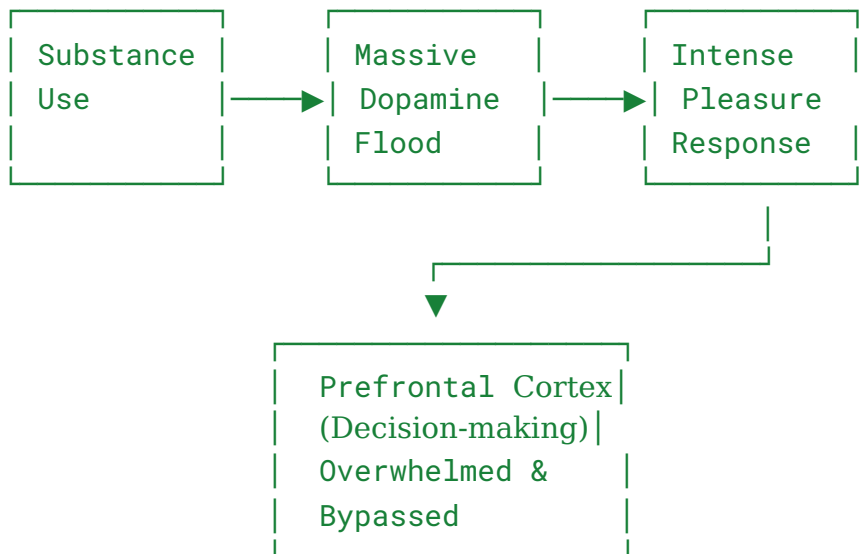
## HOW SUBSTANCES HIJACK THE BRAIN

### What happens with addictive substances:

1. **Artificial activation:** Substances like alcohol, opioids, or stimulants trigger dopamine release that can be 2-10 times stronger than natural rewards.

2. **Overwhelming the system:** This flood of dopamine creates intense pleasure that teaches the brain "this is REALLY important—remember this!"
3. **Brain adaptation:** With repeated use, the brain adapts by:
  - Producing less natural dopamine (tolerance)
  - Reducing dopamine receptors (downregulation)
  - Weakening prefrontal cortex control
  - Strengthening automatic habit circuits

#### ADDICTION REWARD PROCESSING



□

## THE THREE-STAGE CYCLE OF ADDICTION

Addiction typically progresses through three recurring stages:

### 1. Binge/Intoxication Stage

- Seeking and consuming the substance
- Experiencing the "high" or reward
- Brain areas involved: Basal ganglia (reward circuit)

### 2. Withdrawal/Negative Affect Stage

- Experiencing discomfort when substance is unavailable
- Feeling anxiety, irritability, or depression
- Brain areas involved: Extended amygdala (stress circuit)

### 3. Preoccupation/Anticipation Stage

- Craving and obsessive thinking about substance

- Planning how to obtain and use
- Brain areas involved: Prefrontal cortex (executive function)

**This creates a powerful cycle:**

- Using substances → temporary relief/pleasure
  - Stopping use → withdrawal/discomfort
  - Experiencing stress → increased craving
  - Reduced impulse control → using again
- 

## **WHY SOME PEOPLE ARE MORE VULNERABLE**

Addiction risk is influenced by multiple factors:

### **Genetic Factors (40-60% of risk)**

- Family history of addiction
- Variations in genes affecting dopamine processing
- Differences in stress response systems
- Impulsivity and novelty-seeking traits

### **Environmental Factors**

- Trauma and adverse childhood experiences
- Chronic stress exposure
- Early age of first use
- Social and peer influences
- Access and availability of substances

### **Mental Health Factors**

- Pre-existing conditions like depression, anxiety, ADHD
- Using substances to self-medicate emotional pain
- Trauma history affecting brain stress systems

**The combination of these factors creates individual vulnerability:**

- Someone with high genetic risk + trauma history + mental health challenges has greater vulnerability
  - No single factor determines addiction destiny
- 

## **UNDERSTANDING TOLERANCE & WITHDRAWAL**

**Tolerance:** The brain adapts to repeated substance exposure, requiring more of the substance to achieve the same effect.

### **How tolerance develops:**

1. The brain produces less dopamine naturally
2. Dopamine receptors decrease in number
3. The brain's sensitivity to dopamine diminishes
4. Larger amounts are needed for the same effect

**Withdrawal:** When substance use stops, the brain—now adapted to the substance—struggles to function normally.

**Common withdrawal effects:**

- Physical symptoms (pain, nausea, tremors)
- Emotional symptoms (anxiety, irritability, depression)
- Cognitive symptoms (difficulty concentrating, confusion)
- Sleep disruption and fatigue

**This creates a powerful trap:**

- Using feels necessary just to feel "normal"
  - Discomfort drives continued use despite consequences
  - The prefrontal cortex's decision-making is compromised
- 

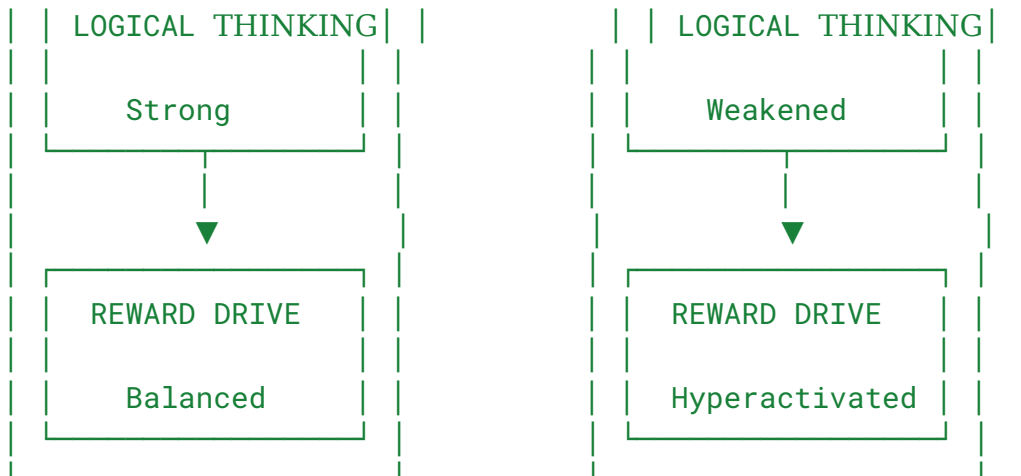
## WHY "JUST STOP" DOESN'T WORK

Understanding the brain changes explains why addiction isn't simply a matter of willpower:

1. **Disrupted balance:** The reward system becomes hyper-focused on the substance while natural rewards provide less satisfaction.
2. **Impaired control:** The prefrontal cortex (responsible for decision-making and impulse control) is altered, making it harder to resist urges.
3. **Stress sensitivity:** The brain's stress systems become more reactive, triggering intense cravings during stress.
4. **Conditioned cues:** The brain forms strong associations between substances and environmental cues (people, places, emotions), triggering automatic craving responses.
5. **Memory reconditioning:** Substance use creates powerful emotional memories that drive behavior even after long periods of abstinence.

## DECISION-MAKING CHANGES IN ADDICTION





□

## RECOVERY: HEALING THE BRAIN

The good news is that the brain can heal with the right support:

### Short-term recovery changes (days to weeks):

- Basic chemical balance begins to restore
- Acute withdrawal symptoms subside
- Sleep and appetite begin to normalize

### Medium-term recovery changes (weeks to months):

- Dopamine system slowly rebalances
- Stress reactivity begins to decrease
- Cravings become less intense but still present
- Thinking becomes clearer

### Long-term recovery changes (months to years):

- Prefrontal cortex control strengthens
- New, healthier neural pathways form
- Cue reactivity diminishes
- Natural rewards become more satisfying again

### What helps the brain heal:

- Consistent abstinence from substances
- Proper nutrition and hydration
- Regular exercise and sleep
- Stress management techniques
- Meaningful social connections
- Mental health treatment when needed
- Medications for addiction (when appropriate)

---

## REFLECTION QUESTIONS

1. How does understanding the brain science of addiction change how you think about addiction?

---

---

2. What aspects of your own experience make more sense now that you understand the brain changes involved?

---

---

3. How might this information help reduce shame and stigma around addiction?

---

---

4. What does this understanding suggest about effective approaches to recovery?

---

---

## PERSONAL CONNECTIONS

**Instructions:** If you've experienced addiction or supported someone who has, consider how these brain changes have manifested in real life.

**Signs of reward system changes I've noticed:**

---

**Examples of decision-making/impulse control changes:**

---

**Cues or triggers that have created automatic responses:**

---

**Recovery healing I've experienced or observed:**

---

---

## KEY TAKEAWAYS

- Addiction involves measurable changes to brain structure and function
  - These changes affect motivation, decision-making, and impulse control
  - Individual vulnerability varies based on genetics, environment, and mental health
  - Recovery requires addressing both the brain changes and underlying factors
  - Understanding the neuroscience reduces shame and supports more effective treatment
  - The brain can heal with the right support and approaches
  - Recovery is possible, though it often involves ongoing management
- 

## RESOURCES FOR LEARNING MORE

- National Institute on Drug Abuse (NIDA): [drugabuse.gov](http://drugabuse.gov)
  - Substance Abuse and Mental Health Services Administration (SAMHSA): [samhsa.gov](http://samhsa.gov)
  - SMART Recovery: [smartrecovery.org](http://smartrecovery.org)
  - "The Biology of Desire" by Marc Lewis
  - "In the Realm of Hungry Ghosts" by Gabor Maté
  - "Unbroken Brain" by Maia Szalavitz
  - "Never Enough" by Judith Grisel
-